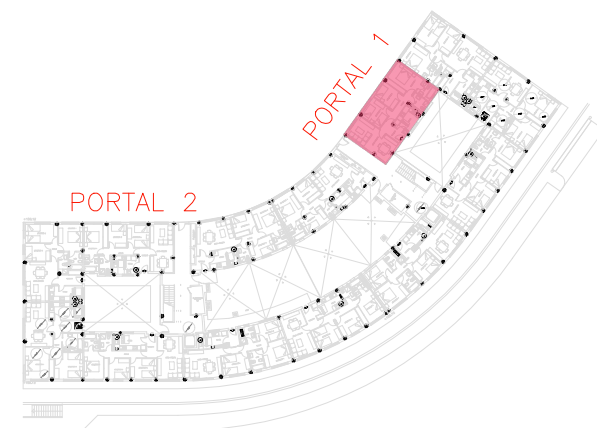
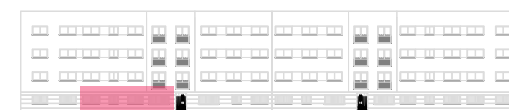
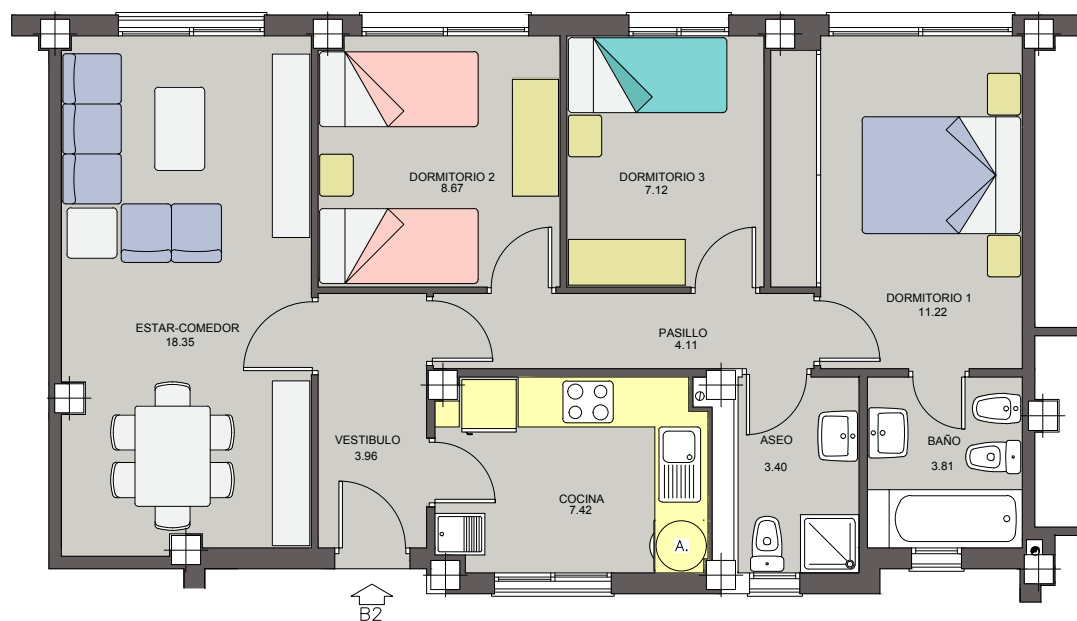


Edificio Huerta Téllez

Calle Miguel Arruda

PARCELA 1B2
PORTAL 1
PLANTA BAJA
VIVIENDA B2

3 DORMITORIOS

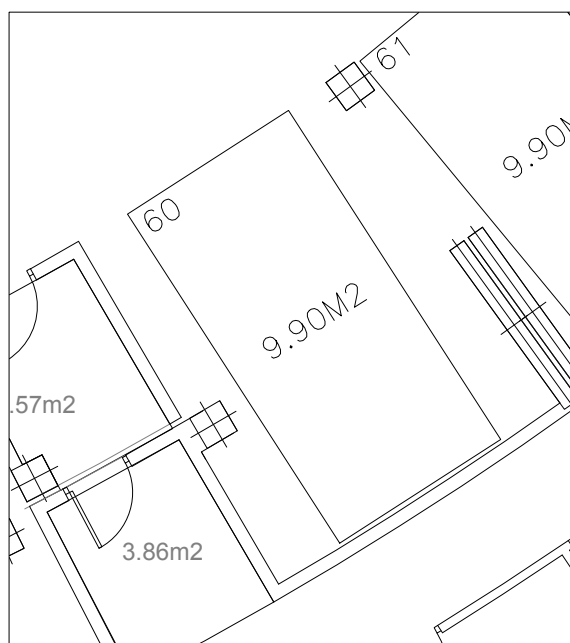
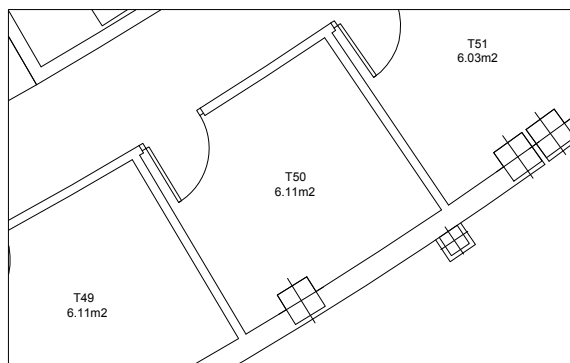


SUPERFICIE ÚTIL: 68,06 M2
SUPERFICIE CONSTRUIDA: 90,56 M2
TRASTERO Nº 50 (SUP. 6,11 M2) EN PLANTA -1
PLAZA DE GARAJE Nº 60 EN PLANTA -1

Edificio Huerta Téllez

Calle Miguel Arruda

PARCELA 1B2
PORTAL 1
PLANTA BAJA
VIVIENDA B2



TRASTERO Nº 50 SOTANO -1
PLAZA DE GARAJE Nº 60 SOTANO -1



TRASTERO Y PLAZA GARAJE

